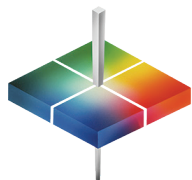




vista®

for...

MOTOR OIL



HunterLab

Color is a key indicator of quality in motor oil. In many cases, color is an indication of the degree of refinement of the material. When the color range of a product is known, a variation outside the established range can indicate possible contamination with another product.

As the petrochemical industry has grown, it has developed criteria to judge the color of motor oil using the APHA, Gardener, Saybolt and ASTM D1500 color scales. This required measuring samples in different sizes of containers depending on the desired scale.

Vista's Custom Index feature allows users to measure samples in the container of their choice and get APHA, Gardener, Saybolt and ASTM D1500 results, simultaneously with haze% compliant with ASTM D1003, Procedure B. Haze% is a valuable added feature to identify the presence of contaminants and particulates and another indicator of product quality.

Vista® includes easy to navigate embedded EasyMatch® Essentials software and modern data streaming and communications. With its capacitive high-resolution color touchscreen display, Vista® sets a new standard for transmission color and appearance analysis of motor oil.



Measure APHA, Gardener, Saybolt, and ASTM D1500 in your desired pathlength, and report results in any standard pathlength



Verify product and process integrity — simultaneously measure transmission color and haze% in a single measurement



Embedded EasyMatch® Essentials software — no PC required

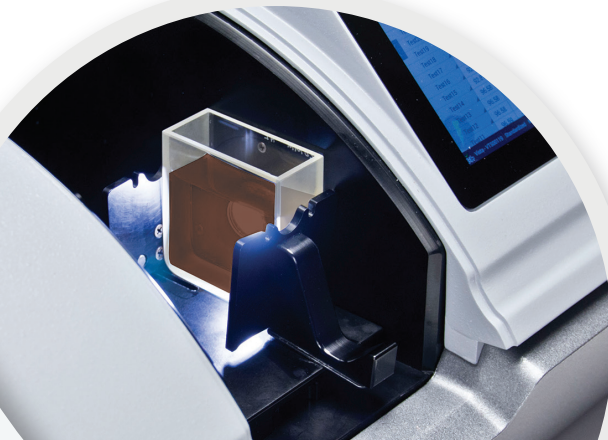


Flow-through cells available for continuous color and haze measurements



Operator friendly one-touch standardization – no accessories required

measure
color
the way your
eye sees it

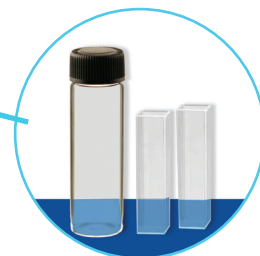


The Best Solution for Color Measurement of Motor Oil



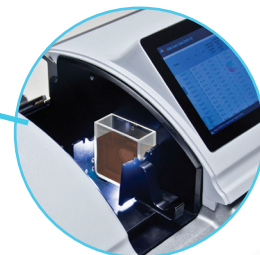
Measure APHA, Gardener, Saybolt, and ASTM D1500 in your desired pathlength, and report results in any standard pathlength

With Vista®, there is no more need to use a 33mm pathlength cell for ASTM D1500 results, or 50mm pathlength cell for Saybolt results. Vista's Custom Index feature allows users to use one cell to get accurate standard APHA/Gardner/Saybolt/ASTM D1500 results in a single measurement.



Verify product and process integrity - simultaneously measure transmission color and haze% in a single measurement

Simultaneously measure transmittance color and haze% compliant with ASTM D1003 Procedure B, in a single measurement, and in less than 7 seconds.



Smart user interface and data management

View measurement results and color graphics on the 7-inch 1280x800 capacitive industrial touchscreen, and easily communicate data where it needs to go via USB, USB on-the-go, Ethernet, and built-in email.



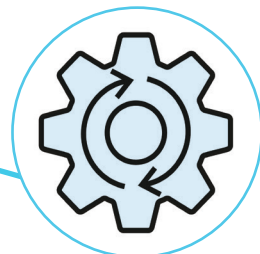
Embedded EasyMatch Essentials software – no PC required

The onboard EasyMatch® Essentials software is intuitive and easy to navigate. It offers applications to streamline production, allowing users to create their own workspaces to meet their specific application workflow needs. EasyMatch® Essentials comes preloaded with most standard transmittance scales and indices widely used in industry.



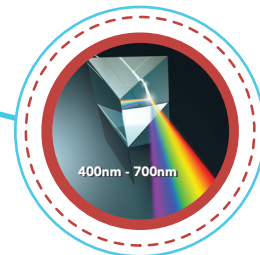
Operator friendly one-touch standardization

Instrument standardization is fully automated, no tiles or accessories are required. Simply press the 'standardize' icon, and the instrument automatically standardizes for both color and haze.

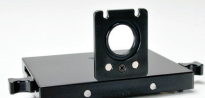


Full spectrum, balanced LED illumination

Illuminating from 400-700nm, the balanced, full spectrum LED illumination is guaranteed to perform to original factory specifications for a minimum of 5 years of continuous measurements for years of worry-free operation.



Keys for the successful measurement of Motor Oil



D02-1017-192
Multi-Function Sample Holder



D02-1017-344
Macro Cell Holder for Color
and Haze Measurement

Optional Accessories

L02-1018-683 10mm Flow Through Cell Holder Kit
Includes:

- 10mm Flow Through Cell (C04-1001-958)
- Cell Holder Assembly (D02-1018-678)
- 1 meter, 7mm ID tubing
- (4) Flow Control Chokes (Various apertures) L02-1018-101



20 mm Flow Through Cell Kit also available

